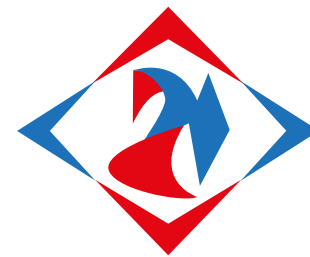


TEZGÜLLER MAKİNA



Tezgüller was found in 1974. Tezgüller company has been manufacturing concrete block machines, concrete pipe machines and all their equipments (Moulds, concrete mixers, conveyor belts, concrete distribution hoppers). The company produced wide variety of engineering products refer to concrete construction section of the industry. Now the manufacturing has been doing in our modern factory (10000m2 closed production area). In such a short time broadened its manufacturing types and nowadays we have a wide customer net to Europe from Asia and Middle East to Africa. Our machines and moulds are being used in 28 different countries. All concrete block moulds have been prepared fully automatically CNC machines. We can serve our customers with full of competitive and economic ways. It will be very useful to your company to consult us when you need a concrete product equipment or new concrete plant. An experienced design team is ready to negotiate with your company in your projects.

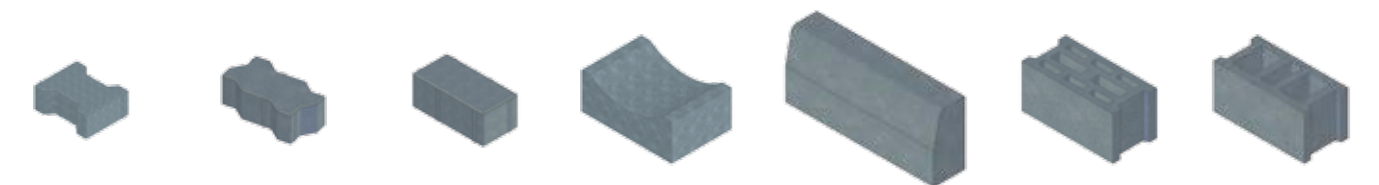


TEZGÜLLER MAKİNA

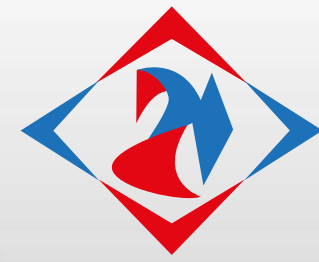
VE KALIP İNŞAAT SANAYİ TİC. LTD. ŞTİ.

Y. Dudullu Organize San. Böl. 2.Cad. No.19 Ümraniye / İstanbul-Türkiye
Tel: +90 216 364 21 03 (pbx) Fax: +90 216 364 20 99 info@tezguller.com.tr
www.tezguller.com.tr

2148 FULL AUTOMATIC CONCRETE BLOCK MACHINE



2148 FULL AUTOMATIC CONCRETE BLOCK MACHINE



TEZGÜLLER MAKİNA

> TECHNICAL SPECIFICATIONS



TECHNICAL PROPERTIES :

Vibration Motor : Weighted from outside
 Lubrication : Gress oil
 Vibration Motor : 3000rpm - 4Pcs x 3.3Kw for bottom
 Vibration Motor : 3000rpm - 2Pcs x 1.4Kw for Upper
 Total Energy Power : 110Kw

HYDRAULIC PROPERTIES:

1.Hydraulic Motor : 1400rpm - 11Kw
 2.Hydraulic Motor : 1400rpm - 15Kw
 3.Hydraulic Motor : 1400rpm - 15Kw
 4.Hydraulic Motor : 1400rpm - 11Kw
 5- Circulation Motor : 1400rpm - 4Kw
 1.Pump : 32lt/min.
 2.Pump : 48lt/min.
 3.Pump : 48lt/min.
 4.Pump : 32lt/min.
 5.Circulation Pump : 70lt/min.
 Working Pressure : 200Bar
 Hydraulic Tank Capacity : 1200lt.

PRODUCTION PROPERTIES:

Mode of Control : Automatic
 Production/Cycle : 20-25 seconds
 Pallet Capacity : 10 pieces
 Pallet Size : 115cm x150cm
 Mould Weight : 1200,-Kg
 Bunker Volume : 1.6m³

MACHINE DIMENSIONS:

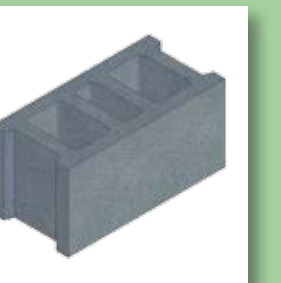
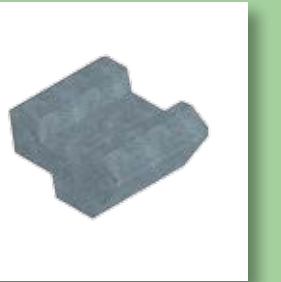
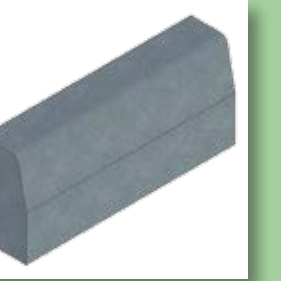
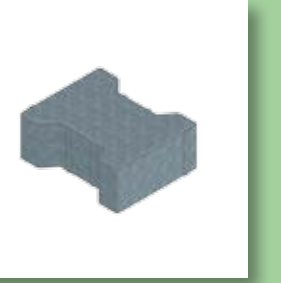
Width : 2.4m
 Height : 4.3m
 Length : 30m
 Machine Weight : 52ton

MACHINE WORKING AREA:

Width : 12m
 Height : 6m
 Length : 37m

2148 FULL AUTOMMATIC CONCRETE BLOCK MACHINE:

- 2148 has a double bunker
- 2148 can produce double layer stone
- 2148 can produce concrete products from 60mm thickness to 300mm.
- 2148 can produce 1m² concrete block at one press
- 2148 has a property of rapid mould change system
- 2148 is a automatic machine and easy to control
- 2148 has a property of rapid installation and dismantle



2148 FULL AUTOMATIC CONCRETE BLOCK MACHINE • 2148 FULL AUTOMATIC CONCRETE BLOCK MACHINE • 2148 FULL AUTOMATIC CONCRETE BLOCK MACHINE • 2148 FULL AUTOMATIC CONCRETE BLOCK MACHINE • 2148 FULL AUTOMATIC CONCRETE BLOCK MACHINE • 2148 FULL AUTOMATIC CONCRETE BLOCK MACHINE • 2148 FULL AUTOMATIC CONCRETE BLOCK MACHINE